

# MONTHLY MEMBERSHIP PROGRESS REPORT

LOCATION MARYLAND

District 22 A

Results as of: 4/30/2023

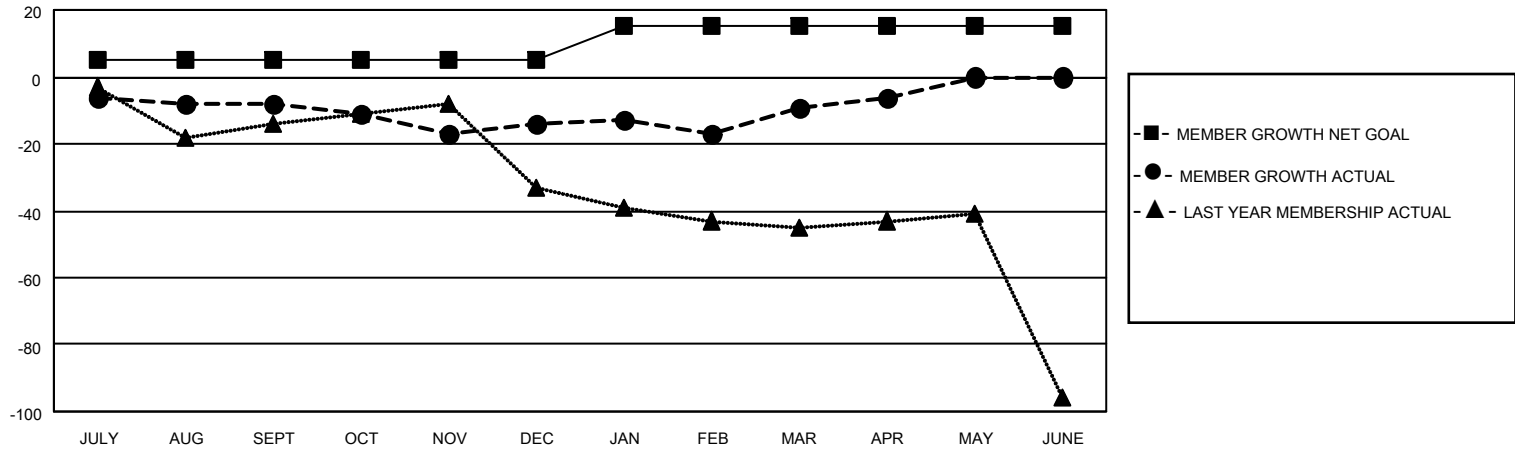
Clubs			
RESULTS FOR 2022-2023			
QUARTER	NEW CLUB GOAL	NEW CLUBS	DROPPED CLUBS
JULY/AUG/SEPT	0	0	0
OCT/NOV/DEC	1	0	0
JAN/FEB/MAR	0	0	0
APR/MAY/JUNE	1	0	0

Members			
RESULTS FOR 2022-2023			
QUARTER	MEMBER GROWTH NET GOAL	MEMBER GROWTH ACTUAL	DROPPED MEMBERS ACTUAL (including transfers)
JULY/AUG/SEPT	5	7	13
OCT/NOV/DEC	0	11	15
JAN/FEB/MAR	10	16	8
APR/MAY/JUNE	0	4	1

**GOALS AND ACTUAL NEW CLUBS CUMULATIVE**



**GOALS AND ACTUAL MEMBERS CUMULATIVE**



<p><b>DROPPED CLUBS: 0</b></p>	<p>11 CLUBS OF 22 ADDED 1 OR MORE NEW MEMBERS</p>	<p style="text-align: center;"><u>GENDER DISTRIBUTION</u></p> <p>MALE 337 (62.87%)                  FEMALE 199 (37.13%)                  NON BINARY 0 (0.00%)                  PREFER NOT TO ANSWER 0 (0.00%)</p>
<p><u>DROPPED MEMBERS</u></p> <p>DECEASED 9                  CLUB CANCELLED 0                  OTHER 28  <b>TOTAL 37</b></p>	<p style="text-align: center;"><a href="#">CLICK HERE FOR CUMULATIVE MEMBERSHIP DATA</a></p>	<p>TOTAL FAMILY UNIT MEMBERS 100                  FAMILY MEMBERS PAYING HALF DUES 51</p>